

SOLAR SHADE HOUSE STRUCTURE - ENERGY PRODUCTION AND SUN PROTECTION



GROUND OR WALL MOUNTED SOLUTIONS

WATERTIGHT SOLUTION

60 CELLS
FRAMED
PV MODULE

ENERGY OPTIMIZATION

**COMPATIBLE WITH
MICRO INVERTER**

Discover the new photovoltaic shade house structure solutions by IRFTS with **IRFTS SHADOW SOLAR HOME** and **GARDEN** compatible with all types of **60 cells - 6"** framed PV modules ⁽¹⁾.

It can be used for **ground** or **wall** mounted installations. Additional living spaces and new storage facilities can easily be created whilst **comfort and solar protection are optimized**.

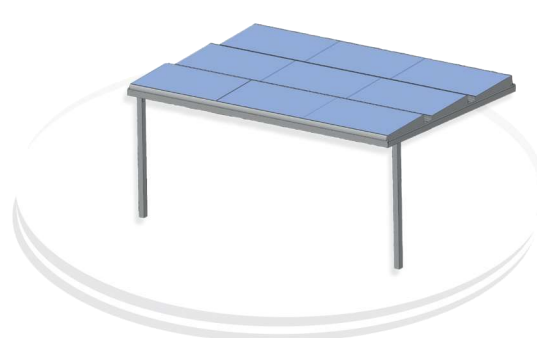
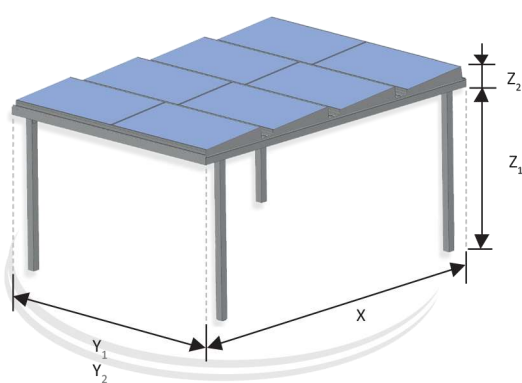
Thanks to its well designed configuration, the shed provides a high level of ventilation to maximize the efficiency of the photovoltaic installation.


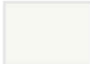


The sleek-featured shed combined with costs energy saving is today **the most complete solution available on the market!**



Compatible with all types of 60 cells - 6" framed PV modules ⁽¹⁾

Technology	<ul style="list-style-type: none">• Shed house structure 100 % waterproof with a PV module slope of 5° for extreme energy efficiency.• Rainwater harvesting down the supportive feet of the shed. Optional connection to a manhole or existing water tank.
Applications	<ul style="list-style-type: none">• Residential - Terrace, sundeck, balcony, patio, pool house, carport, canopy ...• Commercial - Large patio, outdoor shopping area, awning ...• Public building - Entrance, lobby, smoking area, bikes shelter, stations ...• Agricultural and Industrial buildings - Shelter, lean to, industrial outlet ...
Range	<ul style="list-style-type: none">• 2 versions of the shade house are available: <div><div>IRFTS SHADOW SOLAR GARDEN (4 mounting feet version)</div><div>IRFTS SHADOW SOLAR HOME (2 mounting feet version)</div></div>



Configuration	<ul style="list-style-type: none"> 2 rows x 2 columns 	<ul style="list-style-type: none"> 3 rows x 3 columns 	<ul style="list-style-type: none"> 4 rows x 2 columns 	<ul style="list-style-type: none"> 4 rows x 3 columns
Dimensions and surface	<ul style="list-style-type: none"> X : 2330 mm Y₁ : 3418 mm Y₂ : 3441 mm Z₁ : up to 2400 or 3500 mm Z₂ : 275 mm 8 sqm 	<ul style="list-style-type: none"> X : 3517 mm Y₁ : 5094 mm Y₂ : 5128 mm Z₁ : up to 2400 or 3500 mm Z₂ : 275 mm 18 sqm 	<ul style="list-style-type: none"> X : 4744 mm Y₁ : 3418 mm Y₂ : 3441 mm Z₁ : up to 2400 or 3500 mm Z₂ : 275 mm 16 sqm 	<ul style="list-style-type: none"> X : 4744 mm Y₁ : 5094 mm Y₂ : 5128 mm Z₁ : up to 2400 or 3500 mm Z₂ : 275 mm 24 sqm
Installation ⁽²⁾	<ul style="list-style-type: none"> Ground AND / OR wall mounted installations 			
Orientation	<ul style="list-style-type: none"> Landscape 			
Material	<ul style="list-style-type: none"> Aluminium 			
Color	<ul style="list-style-type: none"> Anthracite matt granulated grey (RAL 7016) 		OR white (RAL 9010)	
Options	<ul style="list-style-type: none"> Kit LED Strip LED : IP62 - Neutral white 4000 K⁽³⁾ - 780 Lumens / m - 2x5 m Supply : IP 67 - 4.2 A / m - 24 V Remote control with ON/OFF and variation of light intensity fonctions Ceiling White polycarbonate plate, 16 mm 	 	<ul style="list-style-type: none"> Feet base for installation on concrete slab. Assembly kit for IRFTS SHADOW SOLAR side by side junction 	

(1) PV modules are not included with IRFTS SHADOW SOLAR kit. Compatible with 60 cells - 6 " framed PV modules:

γ_1	with a length from 1635 to 1676 mm , width : 986 to 1001 mm, thickness : 30 to 46 mm.
γ_2	with a length from 1655 à 1685 mm , width : 986 to 1001 mm, thickness : 30 to 46 mm.

(2) Fixings are not included with IRETS SHADOW SOLAR kit. (3) Light variations of colors can appear between 2 strips of LED.

Your nearest contact :